



or



?

## Identifying Mammals Part II with Crocodoc

### Lesson Plan Grade Level 1<sup>1</sup>

#### Objectives



#### Students will be able to:

- Open a web browser
- Log into Crocodoc
- Open a PDF
- Edit a document on Crocodoc
- Identify the mammals from the non-mammals on Crocodoc
- Use the pen tool
- Draw circles around mammals
- Draw squares around non-mammals

#### Materials



- Computers for students
- Internet web browser
- Crocodoc account made by teacher
- PDF with pictures of a: pig, cat, cow, monkey, dog (mammals), snake, alligator, turtle, fish, spider (non-mammals)

<sup>1</sup> Adapted from Introduction to Mammals Lesson Plan Grade Level 1

## Procedure

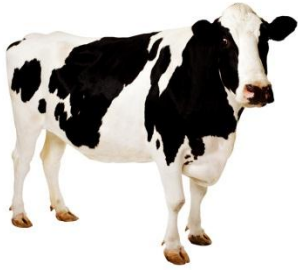


1. Teacher creates a Crocodoc account and uploads the PDF of the mammals and non-mammals.
2. Introduce students to the topic of Crocodoc and how they can draw/edit documents on the computer.
3. Review their prior knowledge of mammals versus non-mammals.
4. Allow students to open up web browser on computer. Students may pair up depending on computer availability.
5. Have them type in [www.crocodoc.com](http://www.crocodoc.com).
6. Write the username and password and let them log in (make it simple).
7. Explain how to click on the PDF file already on the computer. Make sure students are all on the same page.
8. Guide students to the pen tool and write instructions on the board on circling a mammal and putting a square around a non-mammal.
9. Show students how they can change colors of the pen with the draw tool.
10. Allow students to discuss with another student or think for themselves and circle or box/square the animals.
11. After the students have had enough time, have students give their responses and explain whether they are right or wrong.

## Assessment

To assess the student's understanding of the material, they will login and open a PDF file and circle or box a mammal or non-mammal using the draw tool.

**Indiana Standards**



Science:

**SC.1.1.1 2000**

Observe, describe, draw, and sort objects carefully to learn about them.

**SC.1.4.2 2000**

Observe and describe that there can be differences, such as size or markings, among the individuals within one kind of plant or animal group.