

# BNCWiki Home

## BNC Users Should Login!

- Login with your Purdue Career Account [login](#) and [password](#) (important: not your BoilerKey) to view all accessible pages, internal resources documents, and enable commenting and editing.
- Access to the internal resources on BNCWiki is based on 1) having a Purdue Career Account and 2) being subscribed to the BNC-all mailing list. More information can be found on the [New User Setup](#) section of the [Wiki Guide](#).

The Birck Nanotechnology Center Wiki is an attempt to document and centralize some of the massive amount of expertise currently spread around the facility in individuals and research groups. BNC users are encouraged to contribute their processes, experiences, issues, and knowledge in order to facilitate the spread of knowledge and increase the speed, quality, and breadth of research that can take place.

BNCWiki contains:

- Equipment pages for both [Fabrication](#) and [Characterization](#) equipment. These contain a mix of relevant capabilities, technological overviews, SOPs, user manuals, processes, and references.
- [Info Pages](#) to store more general information, including [Wiki guidelines](#), [iLab information](#), [comments/suggestions/problems](#), [general process troubleshooting](#), databases of [standard](#) and [contributed processes](#), [MSDS sheets](#), and starting points for expertise at Birck.

Research groups may also host their own pages, access to which can be restricted to the group if desired. Please contact Justin Wirth for more info.

## Info Pages

- [Equipment Status](#)
- [Getting Started at Birck](#)
- [Wiki Guide](#)
- [Disciplinary Policy](#)
- [Lab Policies and Best Practices](#)
- [iLab](#)
- [Standard Processes](#)
- [SDS Database](#)
- [Research Group Pages](#)
- [BNC Staff Symposium](#)

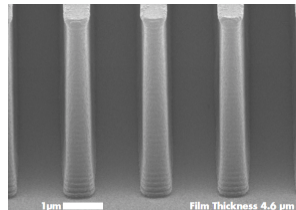
Internal Resources:

- [BNC Library](#)
- [Fab Forum](#)
- [Comments, Suggestions, and Issues](#)
- [Process Help and Troubleshooting](#)
- [Contributed Processes](#)
- [Research Expertise at Birck](#)
- [Birck Business Office](#)
- [Resources for BNC Staff \(Restricted\)](#)

## Featured Equipment Page: JEOL JBX-8100FS



## Featured Technology Page: Photoresists



## Fabrication

[Thermal](#)

[Patterning](#)

[Etching](#)

[Deposition](#)

[Back-End](#)

## Characterization

[Biological Characterization](#)

[Electrical and Magnetic Properties](#)

[Microscopy](#)

[Optical Properties](#)

[Optical Spectroscopy](#)

Biology

Other Fabrication

Roll-to-Roll

Profilometry

Sample Preparation

Surface Characterization

Other Characterization

## **iLab Core Pages**

**Bio**

**Characterization**

**Electron Microscopy**

**Etch**

**Evaporation Sputtering**

**Furnace**

**Growth**

**Lithography**

**Metrology**

**Packaging and Assembly**

**Roll to Roll Technology**

**Utility**

## **iLab Kiosk Pages**

**Bio**

**Characterization**

**Electron Microscopy**

**Etch**

**Evaporation Sputtering**

**Furnace**

**Growth**

**Lithography**

**Metrology**

**Packaging and Assembly**

**Roll to Roll Technology**

**Utility**

## **Contact iLab Customer Support:**

Primary: **800-690-2957**

Backup: **617-297-2805**

E-Mail: [ilab-support@agilent.com](mailto:ilab-support@agilent.com)

**On-line Chat:** Click "**Chat Now**" button in the lower right.

**Help Ticket Submit/Review Instructions**