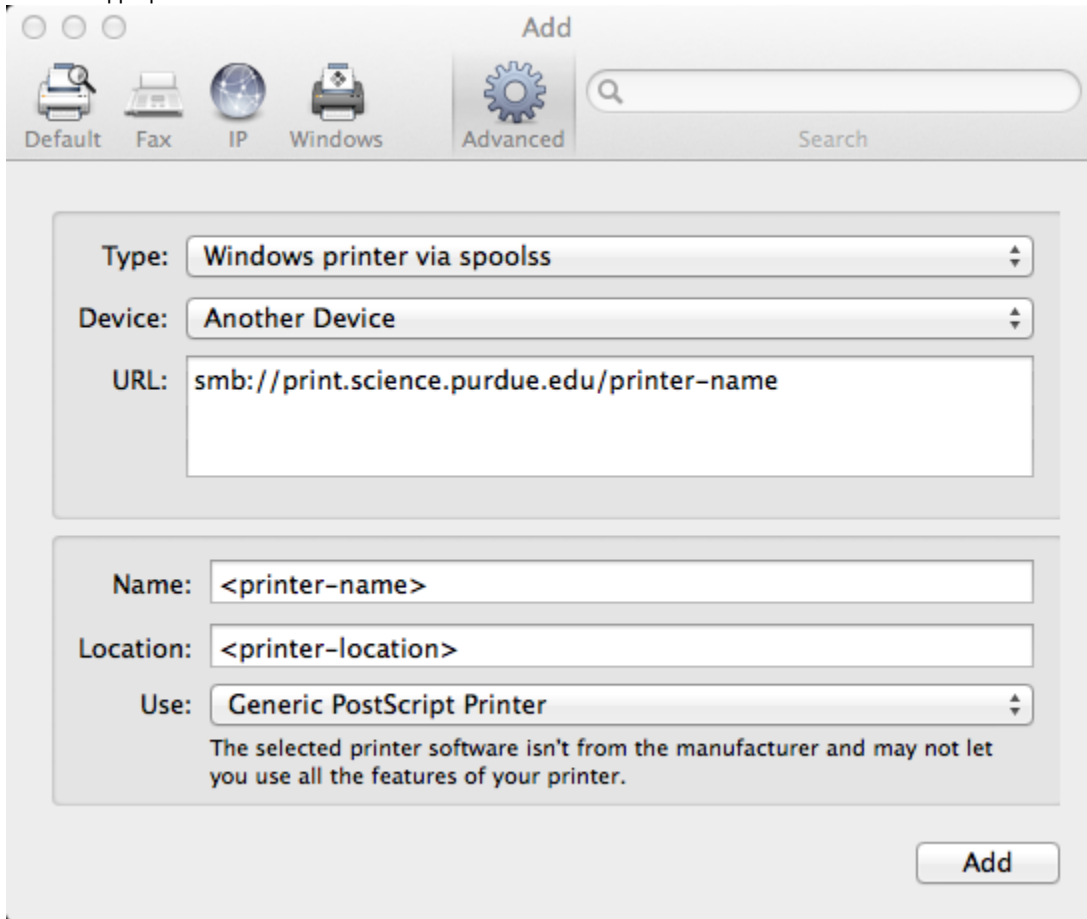


# Printing from OS X

To set up a printer on OS X systems, please follow these steps:

1. Open the **System Preferences**.
2. Click on the **Printers & Scanners** icon.
3. Click on the '+' button.
4. In the new window, press the **Advanced** button.
  - If you do not see the Advanced button, right-click or Control+click on any of the buttons in the tool-bar and select **Customize Toolbar...** then drag the Advanced button to your tool-bar.
5. For **Type**: select "Windows".
6. In the **URL**: text-box insert:
  - `smb://print.science.purdue.edu/<printer-name>`.
7. Fill in the appropriate information for the **Name** and **Location**



8. In the **Print Using**: drop-down-menu, select the appropriate driver for the printer model. If you do not know the printer model, you can safely select *Generic PostScript Printer*.
9. Click the **Add** button, and when the drop-down appears, be sure to check the box for *Duplex Printing Unit*, if the printer has the capability.
10. Click the **Continue** button.
11. When you print for the first time, you will be prompted for a username and password. For the username, input
  - `ONEPURDUE|<username>`

For password input your ITaP career account password. If you do not want to be prompted for a username and password each time, be sure to check the box for 'Remember this password in my keychain', and press the **OK** button.